

| Unit     | Built area | Estimated usable area | Exterior |
|----------|------------|-----------------------|----------|
| 1r-1a    | 85,65      | 71,09                 | 9,13     |
| 1r-2a    | 88,57      | 73,51                 | 9,65     |
| 1r-3a    | 86,12      | 71,48                 | 3,97     |
| 1r-4a    | 85,57      | 71,02                 | 3,7      |
| 2n-1a    | 85,74      | 71,16                 | 9,13     |
| 2n-2a    | 88,58      | 73,52                 | 9,65     |
| 2n-3a    | 86,06      | 71,43                 | 3,7      |
| 2n-4a    | 85,65      | 71,09                 | 3,7      |
| 3r-1a    | 104,14     | 86,44                 | 16,23    |
| 3r-2a    | 81,91      | 67,99                 | 29,27    |
| 3r-3a    | 99,78      | 82,82                 | 15,86    |
| 3r-4a    | 94,81      | 78,69                 | 10,52    |
| 3r-5a    | 79,11      | 65,66                 | 22,27    |
| 3r-6a    | 103,11     | 85,58                 | 10,62    |
| BAIXOS 1 | 85,74      | 71,16                 | 97,46    |
| BAIXOS 2 | 88,76      | 73,67                 | 97,48    |
| BAIXOS 3 | 81,81      | 67,90                 | 4,94     |



| FIRST FLOOR                 |              |
|-----------------------------|--------------|
| First floor – 1st apartment |              |
| HALL                        | 3,59         |
| DINING ROOM - LIVING ROOM   | 23,44        |
| KITCHEN                     | 9,87         |
| CORRIDOR                    | 4,63         |
| BATHROOM 1                  | 5,77         |
| BATHROOM 2                  | 5,01         |
| BEDROOM 1                   | 14,18        |
| BEDROOM 2                   | 8,21         |
| BEDROOM 3                   | 10,95        |
| <b>GENERAL INTERIOR</b>     | <b>85,65</b> |
| BALCONY                     | 9,13         |
| <b>GENERAL EXTERIOR</b>     | <b>9,13</b>  |
| <b>TOTAL</b>                | <b>94,78</b> |

THIS PLAN SHALL NOT CONSTITUTE A LEGALLY BINDING DOCUMENT. IT IS SUBJECT TO AMENDMENTS ARISING FROM THE EXECUTION OF THE WORKS AND TO THE DECISIONS OF THE PROJECT MANAGEMENT. THE FINAL SURFACE AREAS SHALL BE THOSE RESULTING FROM THE COMPLETED WORKS. INDOOR AND OUTDOOR FURNITURE, AS WELL AS HOUSEHOLD APPLIANCES NOT EXPRESSLY INCLUDED IN THE SPECIFICATIONS, DO NOT FORM PART OF THE CONTRACT, AND ANY DIMENSIONS OR POSITIONS INDICATED ARE FOR INFORMATIONAL PURPOSES ONLY.



| FIRST FLOOR                 |              |
|-----------------------------|--------------|
| First floor – 2nd apartment |              |
| HALL                        | 3,92         |
| DINING ROOM - LIVING ROOM   | 22,77        |
| KITCHEN                     | 10,09        |
| CORRIDOR                    | 4,54         |
| BATHROOM 1                  | 6,51         |
| BATHROOM 2                  | 5,04         |
| BEDROOM 1                   | 15,71        |
| BEDROOM 2                   | 9,09         |
| BEDROOM 3                   | 10,90        |
| <b>GENERAL INTERIOR</b>     | <b>88,57</b> |
| BALCONY                     | 9,65         |
| <b>GENERAL EXTERIOR</b>     | <b>9,65</b>  |
| <b>TOTAL</b>                | <b>98,22</b> |

THIS PLAN SHALL NOT CONSTITUTE A LEGALLY BINDING DOCUMENT. IT IS SUBJECT TO AMENDMENTS ARISING FROM THE EXECUTION OF THE WORKS AND TO THE DECISIONS OF THE PROJECT MANAGEMENT. THE FINAL SURFACE AREAS SHALL BE THOSE RESULTING FROM THE COMPLETED WORKS. INDOOR AND OUTDOOR FURNITURE, AS WELL AS HOUSEHOLD APPLIANCES NOT EXPRESSLY INCLUDED IN THE SPECIFICATIONS, DO NOT FORM PART OF THE CONTRACT, AND ANY DIMENSIONS OR POSITIONS INDICATED ARE FOR INFORMATIONAL PURPOSES ONLY.



| FIRST FLOOR                 |              |
|-----------------------------|--------------|
| First floor – 3rd apartment |              |
| HALL                        | 7,26         |
| DINING ROOM - LIVING ROOM   | 23,67        |
| KITCHEN                     | 10,46        |
| CORRIDOR                    | 1,55         |
| BATHROOM 1                  | 6,1          |
| BATHROOM 2                  | 5,28         |
| BEDROOM 1                   | 15,44        |
| BEDROOM 2                   | 9,17         |
| BEDROOM 3                   | 7,19         |
| GENERAL INTERIOR            | 86,12        |
| BALCONY                     | 3,97         |
| GENERAL EXTERIOR            | 3,97         |
| <b>TOTAL</b>                | <b>90,09</b> |

THIS PLAN SHALL NOT CONSTITUTE A LEGALLY BINDING DOCUMENT. IT IS SUBJECT TO AMENDMENTS ARISING FROM THE EXECUTION OF THE WORKS AND TO THE DECISIONS OF THE PROJECT MANAGEMENT. THE FINAL SURFACE AREAS SHALL BE THOSE RESULTING FROM THE COMPLETED WORKS. INDOOR AND OUTDOOR FURNITURE, AS WELL AS HOUSEHOLD APPLIANCES NOT EXPRESSLY INCLUDED IN THE SPECIFICATIONS, DO NOT FORM PART OF THE CONTRACT, AND ANY DIMENSIONS OR POSITIONS INDICATED ARE FOR INFORMATIONAL PURPOSES ONLY.



| FIRST FLOOR                 |              |
|-----------------------------|--------------|
| First floor – 4th apartment |              |
| HALL                        | 7,29         |
| DINING ROOM - LIVING ROOM   | 25,4         |
| KITCHEN                     | 10,03        |
| CORRIDOR                    | 1,34         |
| BATHROOM 1                  | 5,92         |
| BATHROOM 2                  | 5,36         |
| BEDROOM 1                   | 14,1         |
| BEDROOM 2                   | 8,9          |
| BEDROOM 3                   | 7,23         |
| GENERAL INTERIOR            | 85,57        |
| BALCONY                     | 3,70         |
| GENERAL EXTERIOR            | 3,70         |
| <b>TOTAL</b>                | <b>89,27</b> |

THIS PLAN SHALL NOT CONSTITUTE A LEGALLY BINDING DOCUMENT. IT IS SUBJECT TO AMENDMENTS ARISING FROM THE EXECUTION OF THE WORKS AND TO THE DECISIONS OF THE PROJECT MANAGEMENT. THE FINAL SURFACE AREAS SHALL BE THOSE RESULTING FROM THE COMPLETED WORKS. INDOOR AND OUTDOOR FURNITURE, AS WELL AS HOUSEHOLD APPLIANCES NOT EXPRESSLY INCLUDED IN THE SPECIFICATIONS, DO NOT FORM PART OF THE CONTRACT, AND ANY DIMENSIONS OR POSITIONS INDICATED ARE FOR INFORMATIONAL PURPOSES ONLY.



| SECOND FLOOR                 |              |
|------------------------------|--------------|
| Second floor – 1st apartment |              |
| HALL                         | 3,59         |
| DINING ROOM - LIVING ROOM    | 23,44        |
| KITCHEN                      | 9,87         |
| CORRIDOR                     | 4,63         |
| BATHROOM 1                   | 5,77         |
| BATHROOM 2                   | 5,1          |
| BEDROOM 1                    | 14,18        |
| BEDROOM 2                    | 8,21         |
| BEDROOM 3                    | 10,95        |
| <b>GENERAL INTERIOR</b>      | <b>85,74</b> |
| BALCONY                      | 9,13         |
| <b>GENERAL EXTERIOR</b>      | <b>9,13</b>  |
| <b>TOTAL</b>                 | <b>94,87</b> |

THIS PLAN SHALL NOT CONSTITUTE A LEGALLY BINDING DOCUMENT. IT IS SUBJECT TO AMENDMENTS ARISING FROM THE EXECUTION OF THE WORKS AND TO THE DECISIONS OF THE PROJECT MANAGEMENT. THE FINAL SURFACE AREAS SHALL BE THOSE RESULTING FROM THE COMPLETED WORKS. INDOOR AND OUTDOOR FURNITURE, AS WELL AS HOUSEHOLD APPLIANCES NOT EXPRESSLY INCLUDED IN THE SPECIFICATIONS, DO NOT FORM PART OF THE CONTRACT, AND ANY DIMENSIONS OR POSITIONS INDICATED ARE FOR INFORMATIONAL PURPOSES ONLY.



| SECOND FLOOR                 |              |
|------------------------------|--------------|
| Second floor – 2nd apartment |              |
| HALL                         | 3,92         |
| DINING ROOM - LIVING ROOM    | 22,77        |
| KITCHEN                      | 10,09        |
| CORRIDOR                     | 5,54         |
| BATHROOM 1                   | 6,51         |
| BATHROOM 2                   | 5,04         |
| BEDROOM 1                    | 15,71        |
| BEDROOM 2                    | 9,09         |
| BEDROOM 3                    | 10,91        |
| GENERAL INTERIOR             | 88,58        |
| BALCONY                      | 9,65         |
| GENERAL EXTERIOR             | 9,65         |
| <b>TOTAL</b>                 | <b>98,23</b> |

THIS PLAN SHALL NOT CONSTITUTE A LEGALLY BINDING DOCUMENT. IT IS SUBJECT TO AMENDMENTS ARISING FROM THE EXECUTION OF THE WORKS AND TO THE DECISIONS OF THE PROJECT MANAGEMENT. THE FINAL SURFACE AREAS SHALL BE THOSE RESULTING FROM THE COMPLETED WORKS. INDOOR AND OUTDOOR FURNITURE, AS WELL AS HOUSEHOLD APPLIANCES NOT EXPRESSLY INCLUDED IN THE SPECIFICATIONS, DO NOT FORM PART OF THE CONTRACT, AND ANY DIMENSIONS OR POSITIONS INDICATED ARE FOR INFORMATIONAL PURPOSES ONLY.



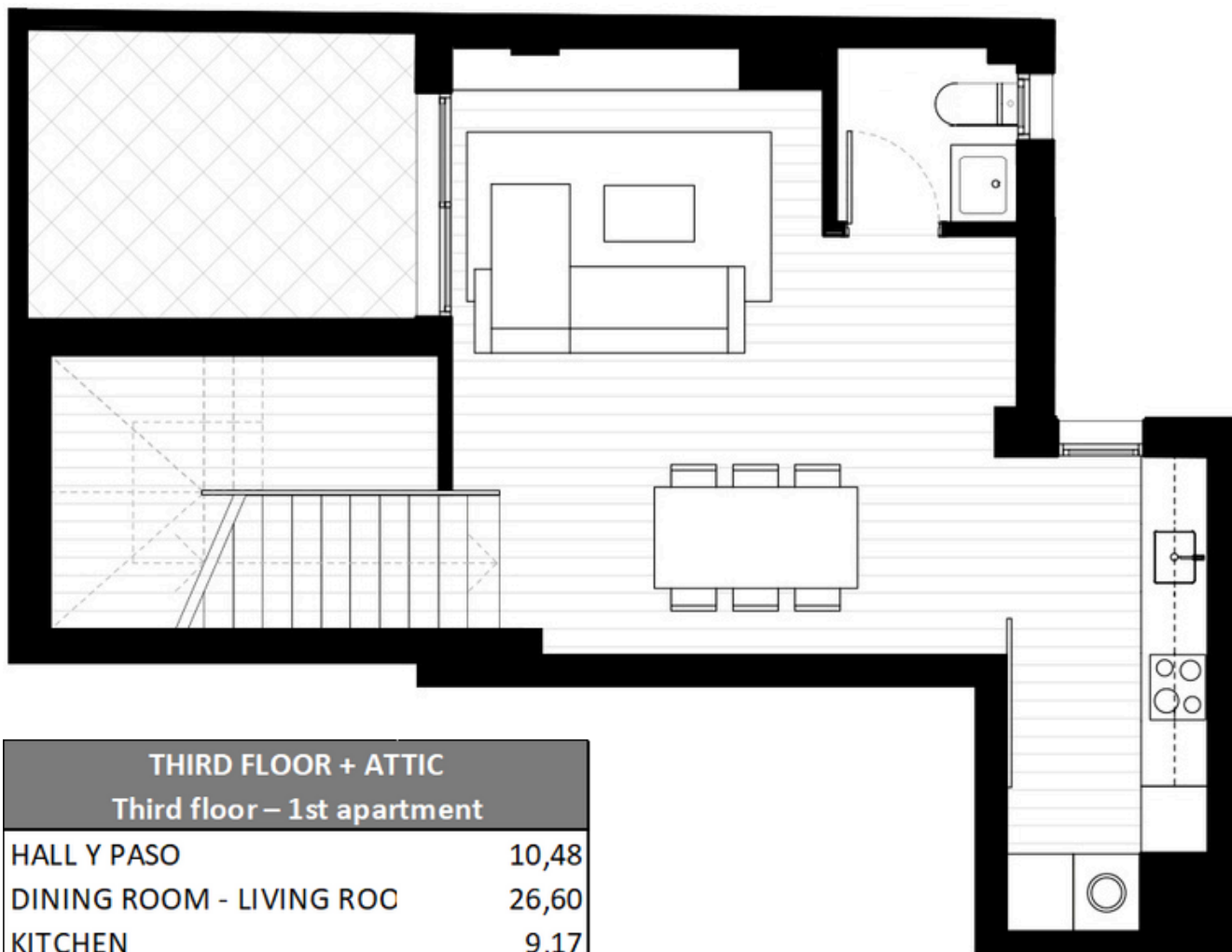
| SECOND FLOOR                 |              |
|------------------------------|--------------|
| Second floor – 3rd apartment |              |
| HALL                         | 7,22         |
| DINING ROOM - LIVING ROOM    | 23,67        |
| KITCHEN                      | 10,46        |
| CORRIDOR                     | 1,55         |
| BATHROOM 1                   | 6,1          |
| BATHROOM 2                   | 5,28         |
| BEDROOM 1                    | 15,44        |
| BEDROOM 2                    | 9,17         |
| BEDROOM 3                    | 7,18         |
| <b>GENERAL INTERIOR</b>      | <b>86,06</b> |
| BALCONY                      | 3,97         |
| <b>GENERAL EXTERIOR</b>      | <b>3,97</b>  |
| <b>TOTAL</b>                 | <b>90,04</b> |

THIS PLAN SHALL NOT CONSTITUTE A LEGALLY BINDING DOCUMENT. IT IS SUBJECT TO AMENDMENTS ARISING FROM THE EXECUTION OF THE WORKS AND TO THE DECISIONS OF THE PROJECT MANAGEMENT. THE FINAL SURFACE AREAS SHALL BE THOSE RESULTING FROM THE COMPLETED WORKS. INDOOR AND OUTDOOR FURNITURE, AS WELL AS HOUSEHOLD APPLIANCES NOT EXPRESSLY INCLUDED IN THE SPECIFICATIONS, DO NOT FORM PART OF THE CONTRACT, AND ANY DIMENSIONS OR POSITIONS INDICATED ARE FOR INFORMATIONAL PURPOSES ONLY.



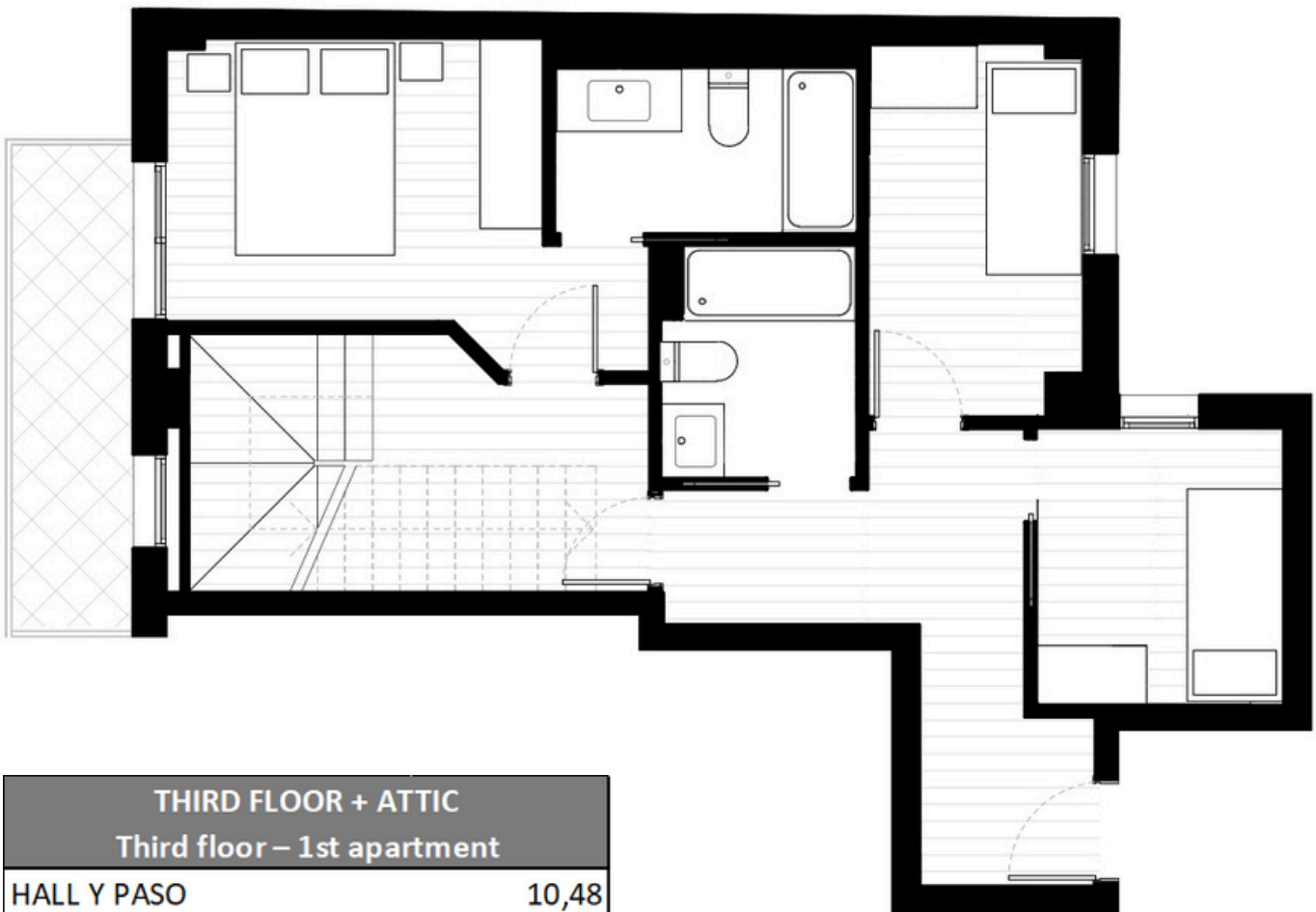
| SECOND FLOOR                 |              |
|------------------------------|--------------|
| Second floor – 4th apartment |              |
| HALL                         | 7,35         |
| DINING ROOM - LIVING ROOM    | 25,4         |
| KITCHEN                      | 10,03        |
| CORRIDOR                     | 1,35         |
| BATHROOM 1                   | 5,93         |
| BATHROOM 2                   | 5,36         |
| BEDROOM 1                    | 14,1         |
| BEDROOM 2                    | 8,9          |
| BEDROOM 3                    | 7,23         |
| <b>GENERAL INTERIOR</b>      | <b>85,65</b> |
| BALCONY                      | 3,7          |
| <b>GENERAL EXTERIOR</b>      | <b>3,7</b>   |
| <b>TOTAL</b>                 | <b>89,35</b> |

THIS PLAN SHALL NOT CONSTITUTE A LEGALLY BINDING DOCUMENT. IT IS SUBJECT TO AMENDMENTS ARISING FROM THE EXECUTION OF THE WORKS AND TO THE DECISIONS OF THE PROJECT MANAGEMENT. THE FINAL SURFACE AREAS SHALL BE THOSE RESULTING FROM THE COMPLETED WORKS. INDOOR AND OUTDOOR FURNITURE, AS WELL AS HOUSEHOLD APPLIANCES NOT EXPRESSLY INCLUDED IN THE SPECIFICATIONS, DO NOT FORM PART OF THE CONTRACT, AND ANY DIMENSIONS OR POSITIONS INDICATED ARE FOR INFORMATIONAL PURPOSES ONLY.



Duplex floor

| THIRD FLOOR + ATTIC         |               |
|-----------------------------|---------------|
| Third floor – 1st apartment |               |
| HALL Y PASO                 | 10,48         |
| DINING ROOM - LIVING ROOM   | 26,60         |
| KITCHEN                     | 9,17          |
| CORRIDOR                    | 6,53          |
| BATHROOM 1                  | 6,23          |
| BATHROOM 2                  | 4,48          |
| BEDROOM 1                   | 13,27         |
| BEDROOM 2                   | 9,15          |
| BEDROOM 3                   | 7,30          |
| TOILET                      | 3,79          |
| STAIRS                      | 7,14          |
| <b>GENERAL INTERIOR</b>     | <b>104,14</b> |
| BALCONY                     | 5,49          |
| TERRACE                     | 10,74         |
| <b>GENERAL EXTERIOR</b>     | <b>16,23</b>  |
| <b>TOTAL</b>                | <b>120,37</b> |



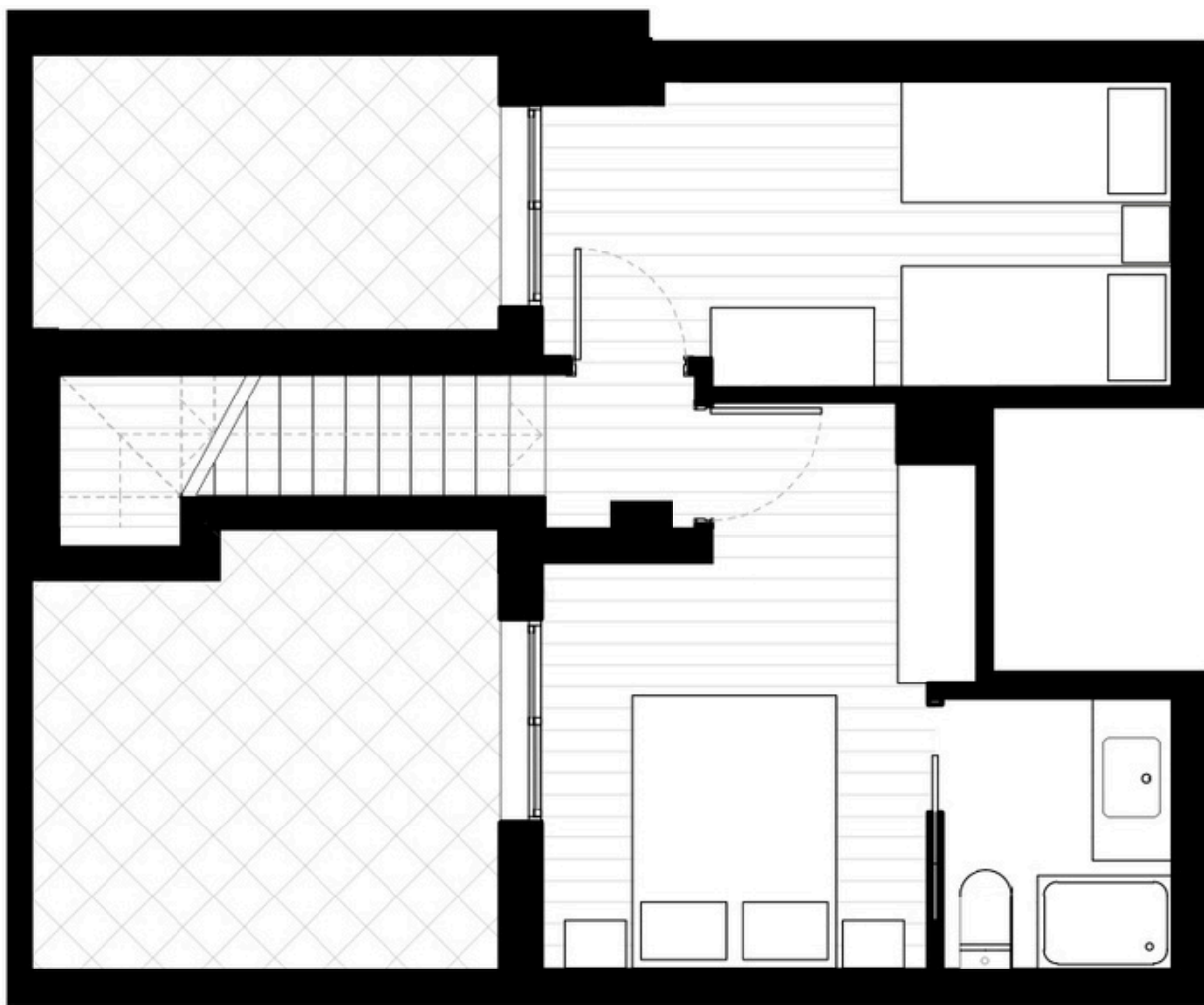
Third floor

| THIRD FLOOR + ATTIC         |               |
|-----------------------------|---------------|
| Third floor – 1st apartment |               |
| HALL Y PASO                 | 10,48         |
| DINING ROOM - LIVING ROOM   | 26,60         |
| KITCHEN                     | 9,17          |
| CORRIDOR                    | 6,53          |
| BATHROOM 1                  | 6,23          |
| BATHROOM 2                  | 4,48          |
| BEDROOM 1                   | 13,27         |
| BEDROOM 2                   | 9,15          |
| BEDROOM 3                   | 7,30          |
| TOILET                      | 3,79          |
| STAIRS                      | 7,14          |
| <b>GENERAL INTERIOR</b>     | <b>104,14</b> |
| BALCONY                     | 5,49          |
| TERRACE                     | 10,74         |
| <b>GENERAL EXTERIOR</b>     | <b>16,23</b>  |
| <b>TOTAL</b>                | <b>120,37</b> |



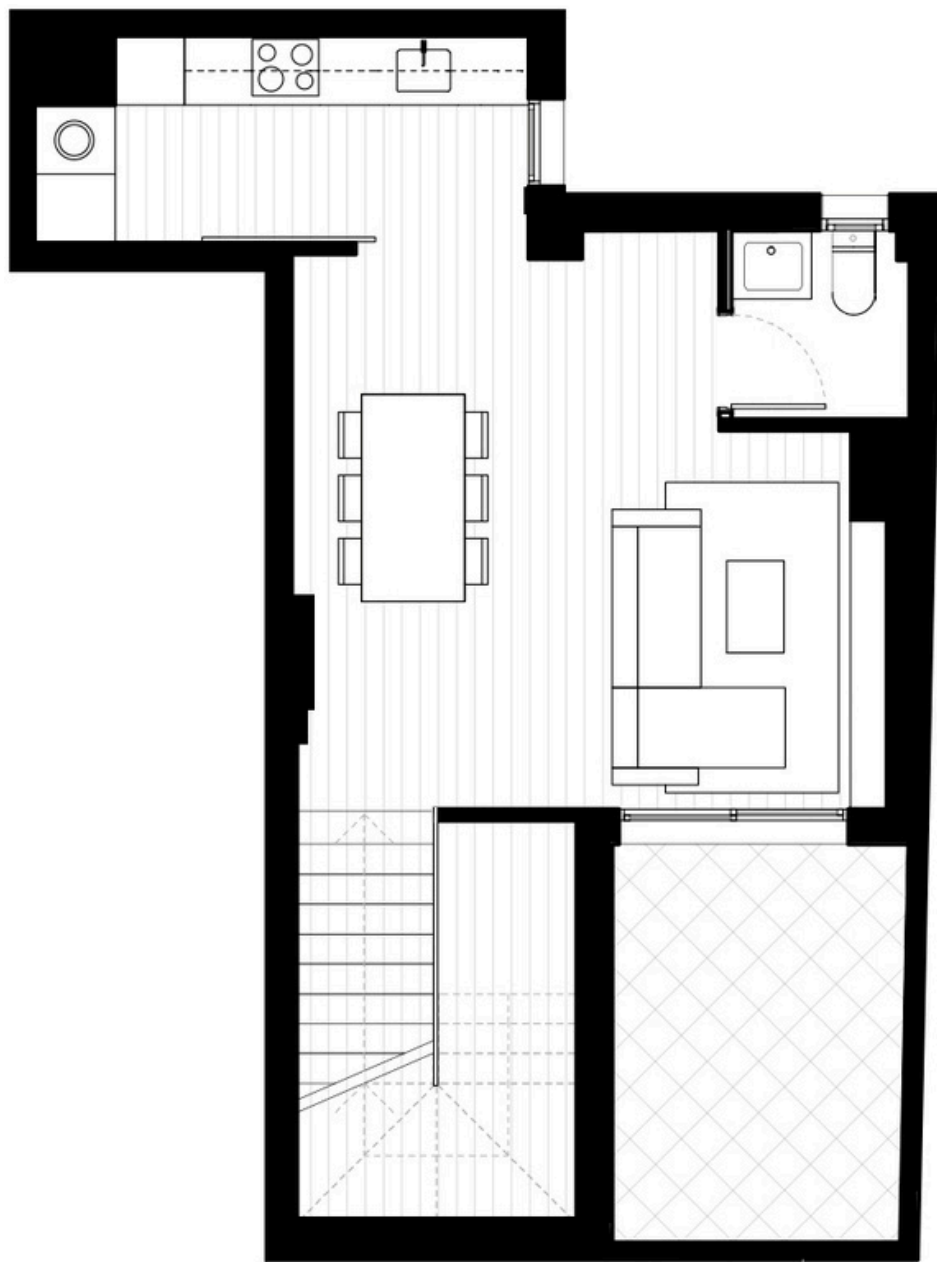
Third floor

| THIRD FLOOR + ATTIC              |               |
|----------------------------------|---------------|
| Third floor – 2nd apartment      |               |
| HALL                             | 3,25          |
| DINING ROOM - LIVING ROOM- KITCH | 23,63         |
| CORRIDORES                       | 6,53          |
| BATHROOM 1                       | 5,16          |
| BATHROOM 2                       | 4,18          |
| BEDROOM 1                        | 12,83         |
| BEDROOM 2                        | 11,8          |
| BEDROOM 3                        | 9,67          |
| STAIRS                           | 4,86          |
| <b>GENERAL INTERIOR</b>          | <b>81,91</b>  |
| BALCONY                          | 8,05          |
| TERRACE 1                        | 12,47         |
| TERRACE 2                        | 8,75          |
| <b>GENERAL EXTERIOR</b>          | <b>29,27</b>  |
| <b>TOTAL</b>                     | <b>111,18</b> |



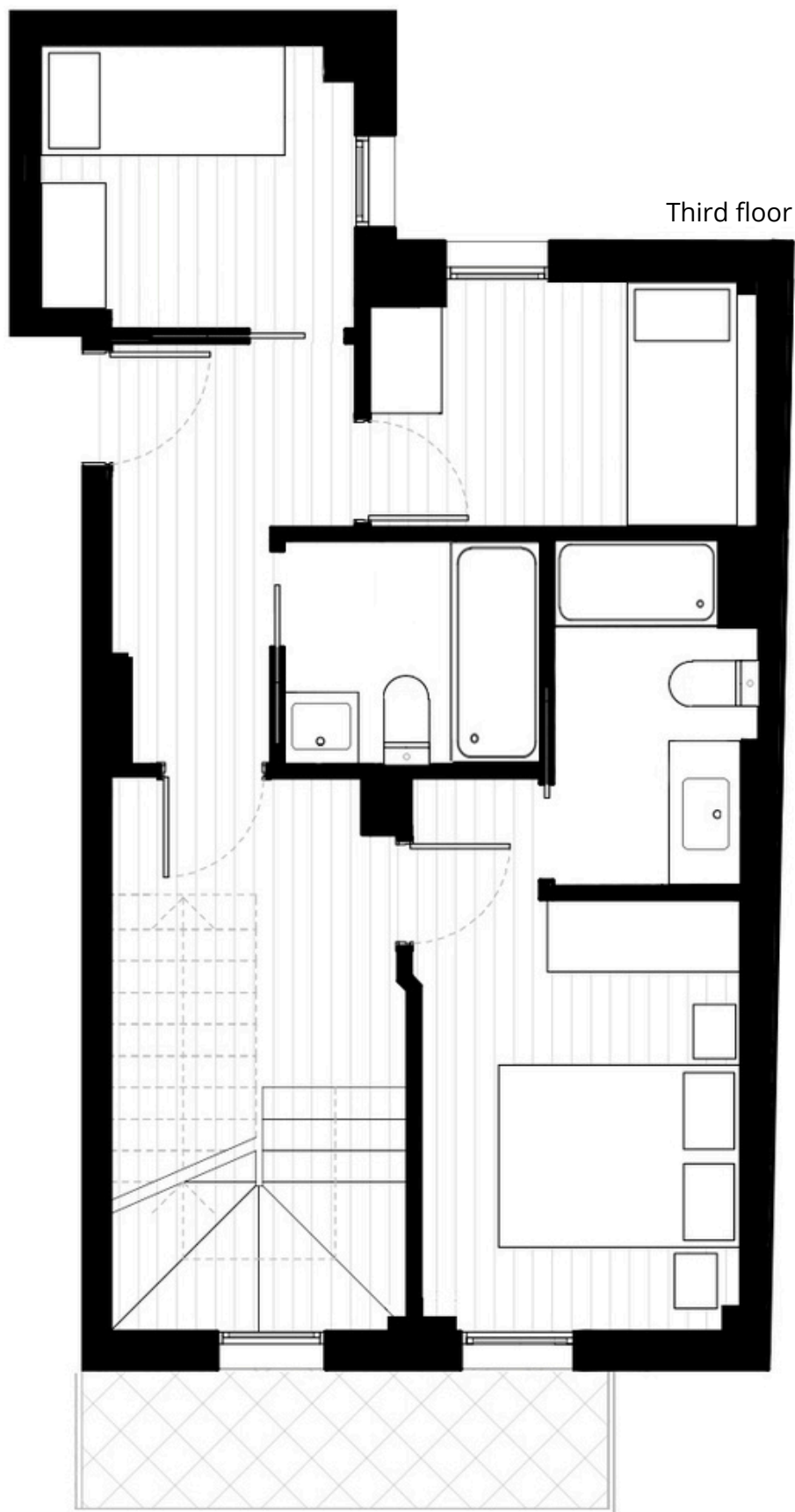
Duplex floor

| THIRD FLOOR + ATTIC              |               |
|----------------------------------|---------------|
| Third floor – 2nd apartment      |               |
| HALL                             | 3,25          |
| DINING ROOM - LIVING ROOM- KITCH | 23,63         |
| CORRIDORES                       | 6,53          |
| BATHROOM 1                       | 5,16          |
| BATHROOM 2                       | 4,18          |
| BEDROOM 1                        | 12,83         |
| BEDROOM 2                        | 11,8          |
| BEDROOM 3                        | 9,67          |
| STAIRS                           | 4,86          |
| <b>GENERAL INTERIOR</b>          | <b>81,91</b>  |
| BALCONY                          | 8,05          |
| TERRACE 1                        | 12,47         |
| TERRACE 2                        | 8,75          |
| <b>GENERAL EXTERIOR</b>          | <b>29,27</b>  |
| <b>TOTAL</b>                     | <b>111,18</b> |

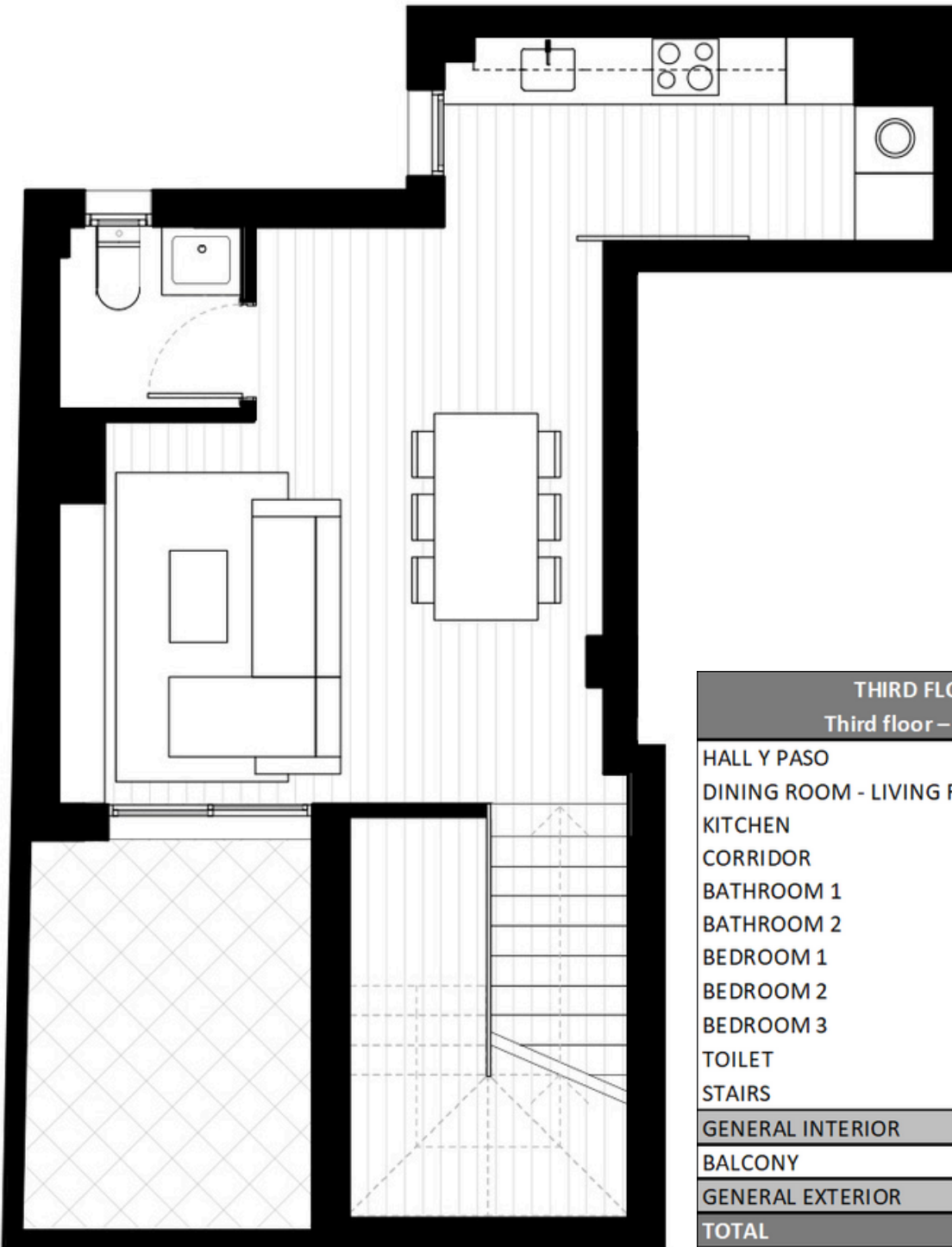


Duplex floor

| THIRD FLOOR + ATTIC         |               |
|-----------------------------|---------------|
| Third floor – 3rd apartment |               |
| HALL Y PASO                 | 6,86          |
| DINING ROOM - LIVING ROOM   | 25,68         |
| KITCHEN                     | 9,27          |
| CORRIDOR                    | 6,94          |
| BATHROOM 1                  | 5,71          |
| BATHROOM 2                  | 4,32          |
| BEDROOM 1                   | 12,79         |
| BEDROOM 2                   | 8,45          |
| BEDROOM 3                   | 8,33          |
| TOILET                      | 3,71          |
| STAIRS                      | 7,72          |
| <b>GENERAL INTERIOR</b>     | <b>99,78</b>  |
| BALCONY                     | 5,26          |
| TERRACE                     | 10,6          |
| <b>GENERAL EXTERIOR</b>     | <b>15,86</b>  |
| <b>TOTAL</b>                | <b>115,64</b> |



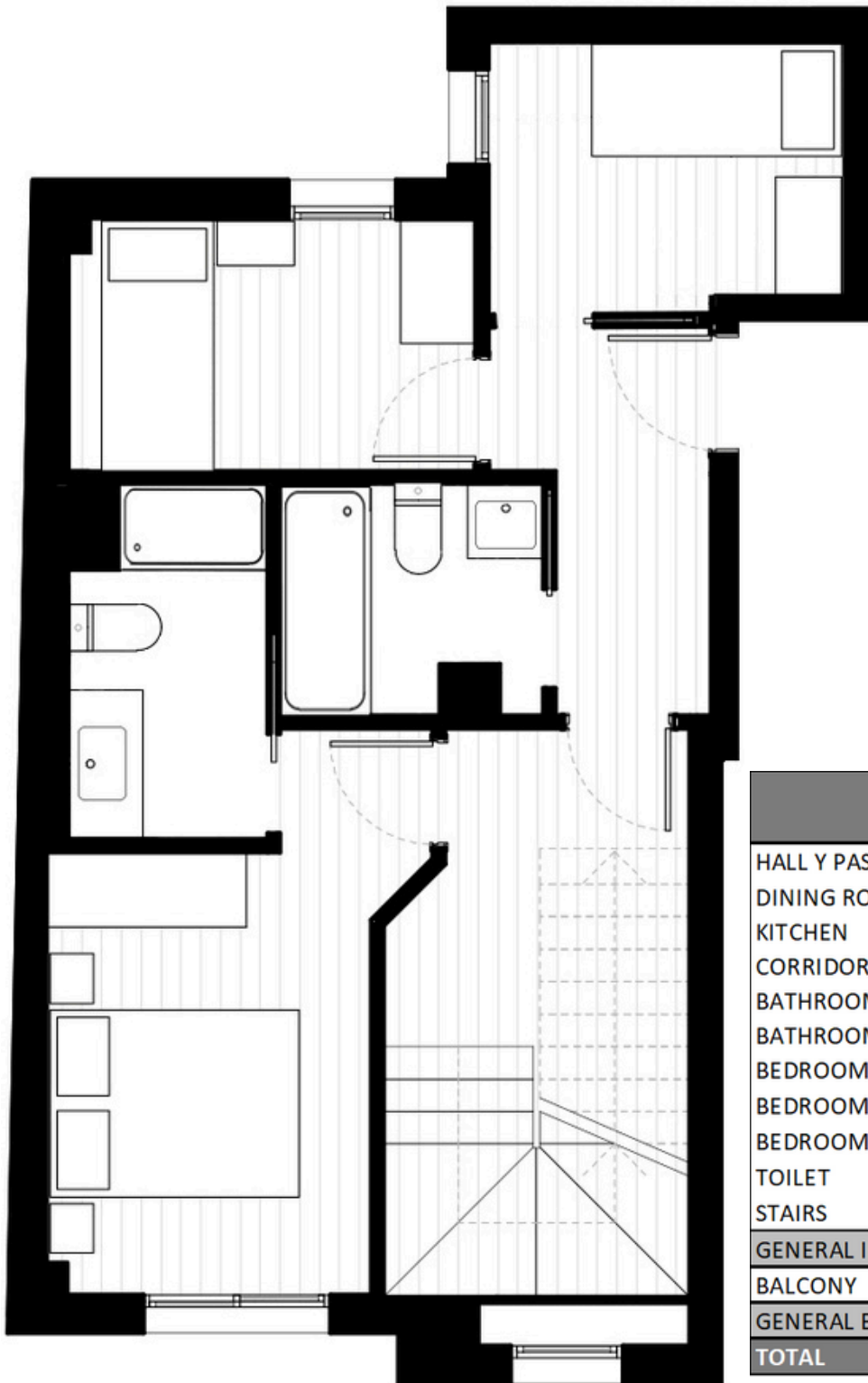
| THIRD FLOOR + ATTIC         |               |
|-----------------------------|---------------|
| Third floor – 3rd apartment |               |
| HALL Y PASO                 | 6,86          |
| DINING ROOM - LIVING ROOM   | 25,68         |
| KITCHEN                     | 9,27          |
| CORRIDOR                    | 6,94          |
| BATHROOM 1                  | 5,71          |
| BATHROOM 2                  | 4,32          |
| BEDROOM 1                   | 12,79         |
| BEDROOM 2                   | 8,45          |
| BEDROOM 3                   | 8,33          |
| TOILET                      | 3,71          |
| STAIRS                      | 7,72          |
| <b>GENERAL INTERIOR</b>     | <b>99,78</b>  |
| BALCONY                     | 5,26          |
| TERRACE                     | 10,6          |
| <b>GENERAL EXTERIOR</b>     | <b>15,86</b>  |
| <b>TOTAL</b>                | <b>115,64</b> |



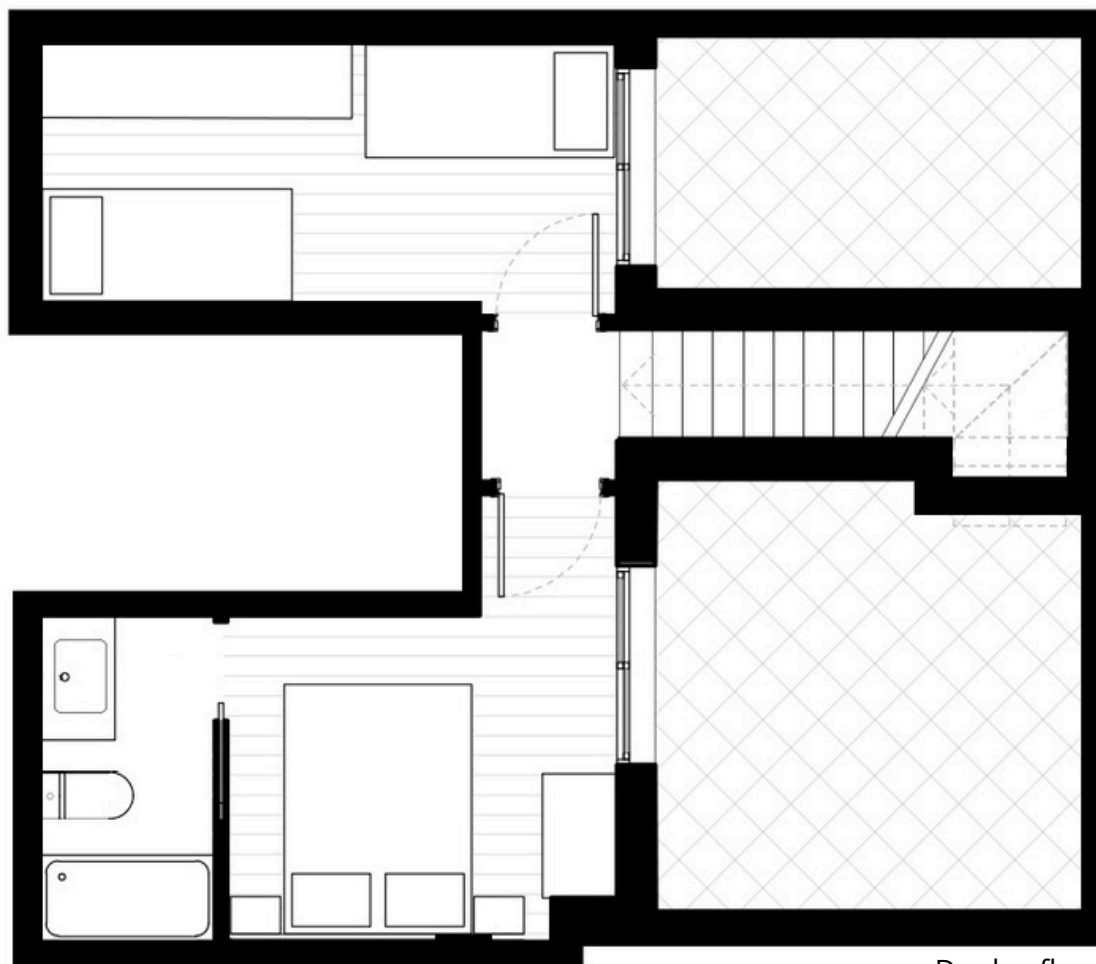
| THIRD FLOOR + ATTIC         |               |
|-----------------------------|---------------|
| Third floor – 4th apartment |               |
| HALL Y PASO                 | 5,29          |
| DINING ROOM - LIVING ROOM   | 24,16         |
| KITCHEN                     | 8,87          |
| CORRIDOR                    | 5,96          |
| BATHROOM 1                  | 5,94          |
| BATHROOM 2                  | 4,32          |
| BEDROOM 1                   | 12,87         |
| BEDROOM 2                   | 8,6           |
| BEDROOM 3                   | 7,16          |
| TOILET                      | 3,83          |
| STAIRS                      | 7,81          |
| <b>GENERAL INTERIOR</b>     | <b>94,81</b>  |
| BALCONY                     | 10,52         |
| <b>GENERAL EXTERIOR</b>     | <b>10,52</b>  |
| <b>TOTAL</b>                | <b>105,33</b> |

Duplex floor

Third floor



| THIRD FLOOR + ATTIC         |               |
|-----------------------------|---------------|
| Third floor – 4th apartment |               |
| HALL Y PASO                 | 5,29          |
| DINING ROOM - LIVING ROOM   | 24,16         |
| KITCHEN                     | 8,87          |
| CORRIDOR                    | 5,96          |
| BATHROOM 1                  | 5,94          |
| BATHROOM 2                  | 4,32          |
| BEDROOM 1                   | 12,87         |
| BEDROOM 2                   | 8,6           |
| BEDROOM 3                   | 7,16          |
| TOILET                      | 3,83          |
| STAIRS                      | 7,81          |
| <b>GENERAL INTERIOR</b>     | <b>94,81</b>  |
| BALCONY                     | 10,52         |
| <b>GENERAL EXTERIOR</b>     | <b>10,52</b>  |
| <b>TOTAL</b>                | <b>105,33</b> |



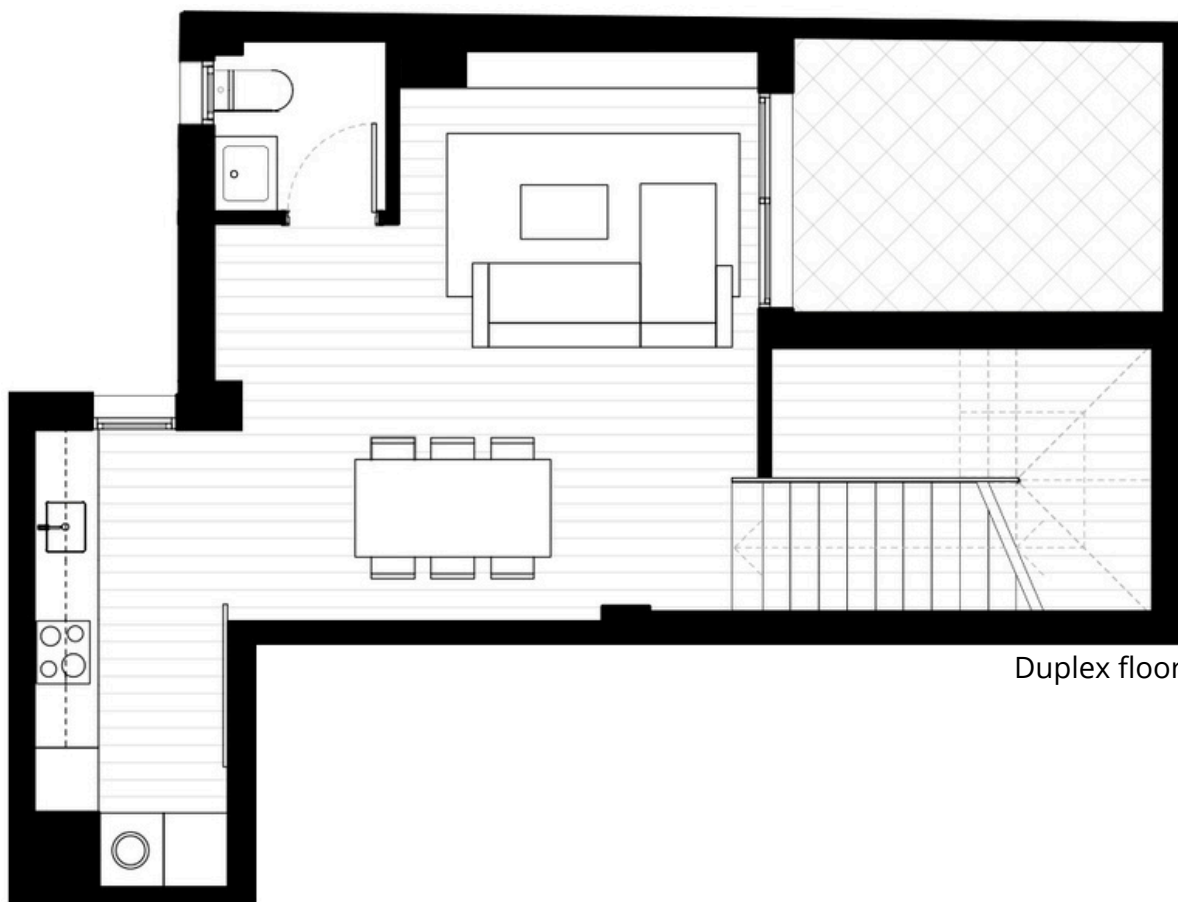
Duplex floor

| THIRD FLOOR + ATTIC         |               |
|-----------------------------|---------------|
| Third floor – 5th apartment |               |
| DINING ROOM - LIVING ROOM   | 27,56         |
| KITCHEN                     | 9,25          |
| CORRIDOR                    | 5,13          |
| BATHROOM 1                  | 4,75          |
| BATHROOM 2                  | 4,55          |
| BEDROOM 1                   | 10,52         |
| BEDROOM 2                   | 11,83         |
| STAIRS                      | 5,52          |
| <b>GENERAL INTERIOR</b>     | <b>79,11</b>  |
| TERRACE 1                   | 13,53         |
| TERRACE 2                   | 8,74          |
| <b>GENERAL EXTERIOR</b>     | <b>22,27</b>  |
| <b>TOTAL</b>                | <b>101,38</b> |

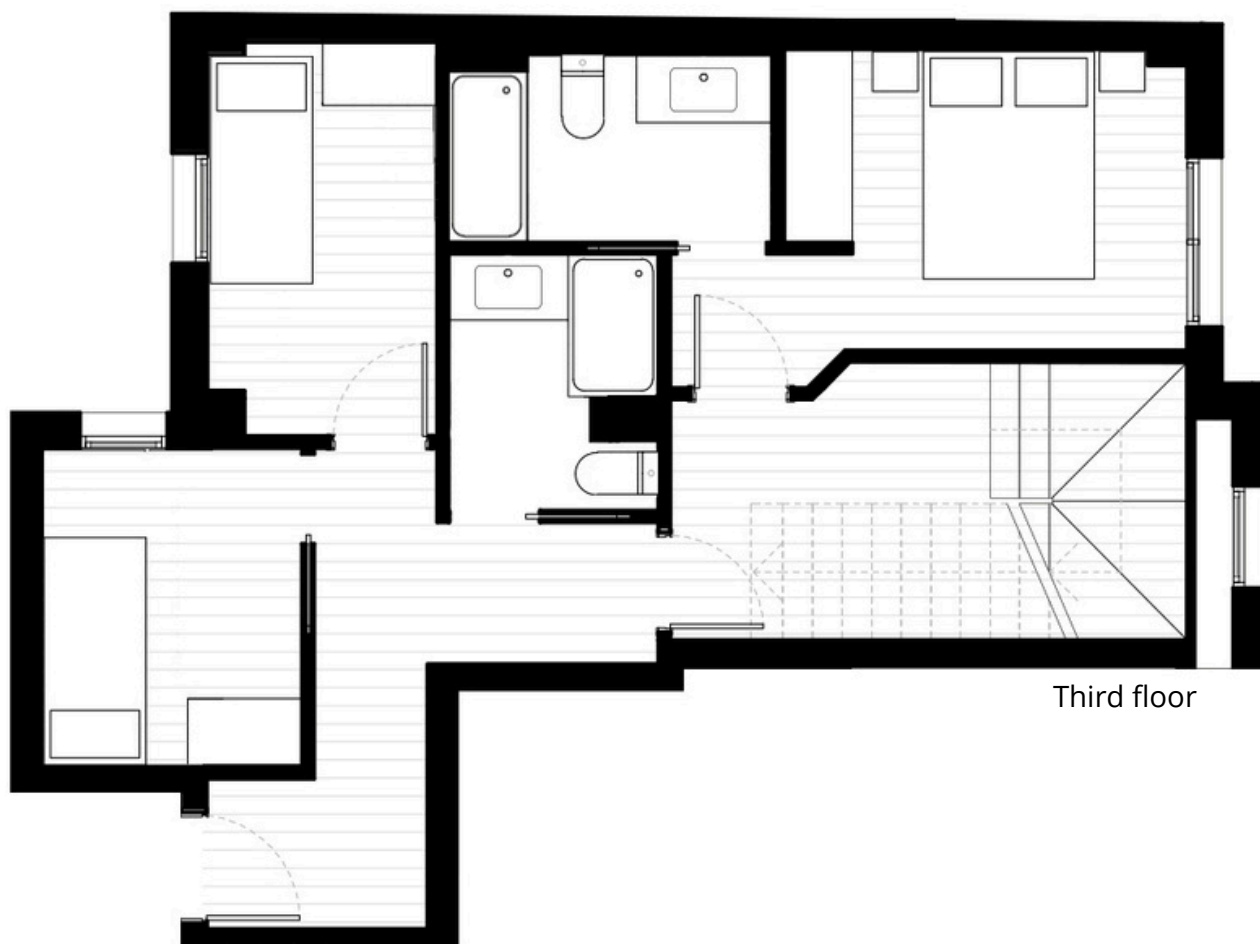


Third floor

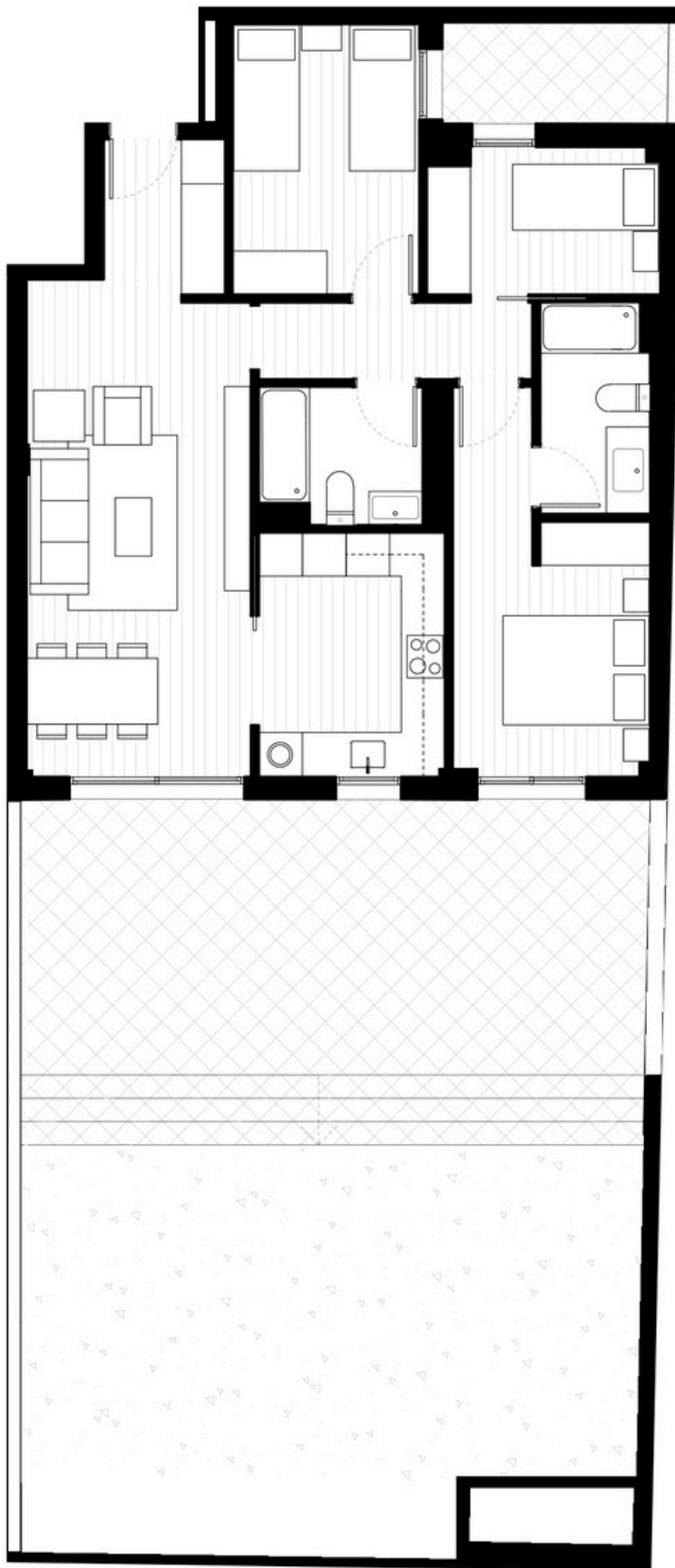
| THIRD FLOOR + ATTIC         |               |
|-----------------------------|---------------|
| Third floor – 5th apartment |               |
| DINING ROOM - LIVING ROOM   | 27,56         |
| KITCHEN                     | 9,25          |
| CORRIDOR                    | 5,13          |
| BATHROOM 1                  | 4,75          |
| BATHROOM 2                  | 4,55          |
| BEDROOM 1                   | 10,52         |
| BEDROOM 2                   | 11,83         |
| STAIRS                      | 5,52          |
| <b>GENERAL INTERIOR</b>     | <b>79,11</b>  |
| TERRACE 1                   | 13,53         |
| TERRACE 2                   | 8,74          |
| <b>GENERAL EXTERIOR</b>     | <b>22,27</b>  |
| <b>TOTAL</b>                | <b>101,38</b> |



| THIRD FLOOR + ATTIC          |               |
|------------------------------|---------------|
| Third floor – 6th apartment" |               |
| HALL Y PASO                  | 9,35          |
| DINING ROOM - LIVING ROOM    | 25,95         |
| KITCHEN                      | 9,24          |
| CORRIDOR                     | 7,04          |
| BATHROOM 1                   | 5,96          |
| BATHROOM 2                   | 4,61          |
| BEDROOM 1                    | 12,91         |
| BEDROOM 2                    | 8,87          |
| BEDROOM 3                    | 7,79          |
| TOILET                       | 3,67          |
| STAIRS                       | 7,72          |
| <b>GENERAL INTERIOR</b>      | <b>103,11</b> |
| TERRACE 1                    | 10,62         |
| <b>GENERAL EXTERIOR</b>      | <b>10,62</b>  |
| <b>TOTAL</b>                 | <b>113,73</b> |

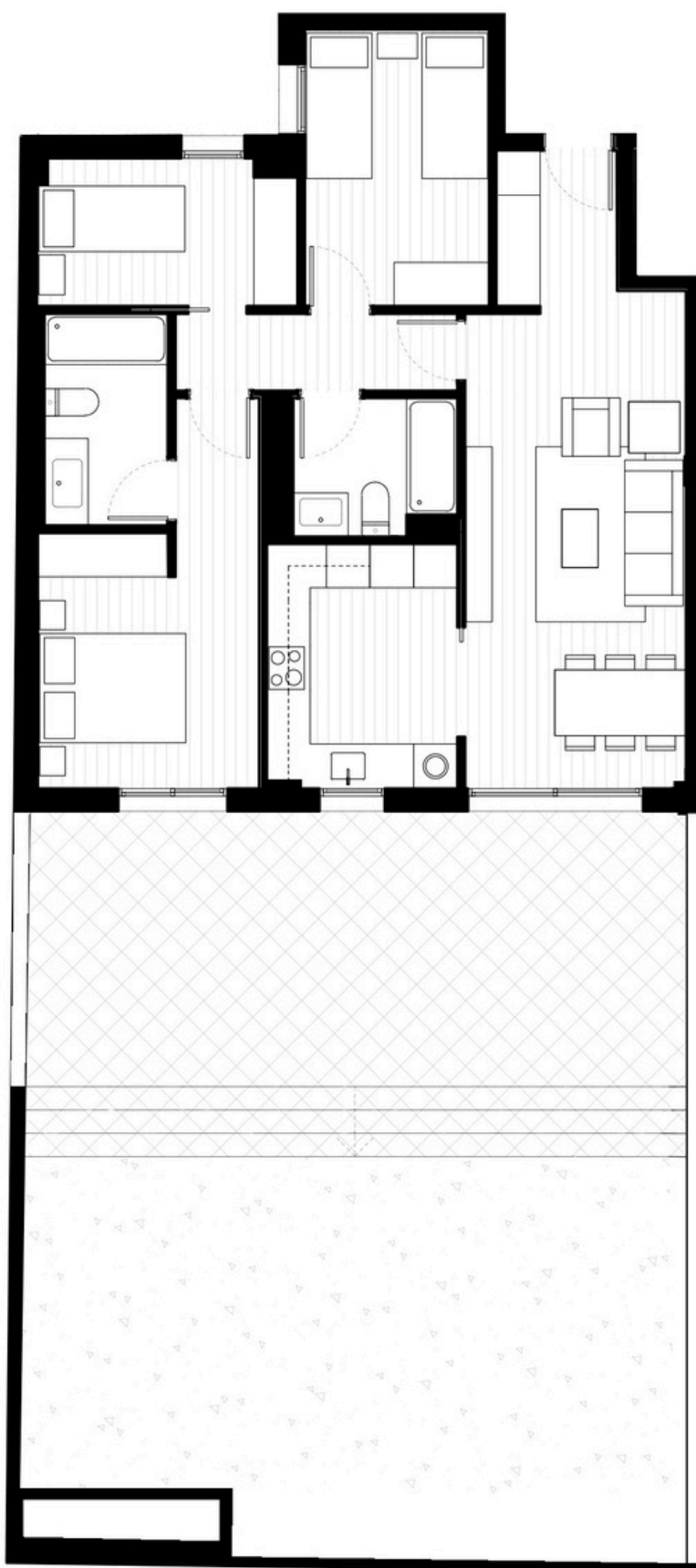


| THIRD FLOOR + ATTIC          |               |
|------------------------------|---------------|
| Third floor – 6th apartment" |               |
| HALL Y PASO                  | 9,35          |
| DINING ROOM - LIVING ROOM    | 25,95         |
| KITCHEN                      | 9,24          |
| CORRIDOR                     | 7,04          |
| BATHROOM 1                   | 5,96          |
| BATHROOM 2                   | 4,61          |
| BEDROOM 1                    | 12,91         |
| BEDROOM 2                    | 8,87          |
| BEDROOM 3                    | 7,79          |
| TOILET                       | 3,67          |
| STAIRS                       | 7,72          |
| <b>GENERAL INTERIOR</b>      | <b>103,11</b> |
| TERRACE 1                    | 10,62         |
| <b>GENERAL EXTERIOR</b>      | <b>10,62</b>  |
| <b>TOTAL</b>                 | <b>113,73</b> |



| GROUND FLOOR                 |               |
|------------------------------|---------------|
| Ground floor – 1st apartment |               |
| HALL                         | 3,61          |
| DINING ROOM - LIVING ROOM    | 23,51         |
| KITCHEN                      | 9,87          |
| CORRIDOR                     | 4,47          |
| BATHROOM 1                   | 5,71          |
| BATHROOM 2                   | 5,03          |
| BEDROOM 1                    | 14,18         |
| BEDROOM 2                    | 8,40          |
| BEDROOM 3                    | 10,96         |
| <b>GENERAL INTERIOR</b>      | <b>85,74</b>  |
| TERRACE 1                    | 51,75         |
| TERRACE 2                    | 40,72         |
| COURTYARD                    | 4,99          |
| <b>GENERAL EXTERIOR</b>      | <b>97,46</b>  |
| <b>TOTAL</b>                 | <b>183,20</b> |

THIS PLAN SHALL NOT CONSTITUTE A LEGALLY BINDING DOCUMENT. IT IS SUBJECT TO AMENDMENTS ARISING FROM THE EXECUTION OF THE WORKS AND TO THE DECISIONS OF THE PROJECT MANAGEMENT. THE FINAL SURFACE AREAS SHALL BE THOSE RESULTING FROM THE COMPLETED WORKS. INDOOR AND OUTDOOR FURNITURE, AS WELL AS HOUSEHOLD APPLIANCES NOT EXPRESSLY INCLUDED IN THE SPECIFICATIONS, DO NOT FORM PART OF THE CONTRACT, AND ANY DIMENSIONS OR POSITIONS INDICATED ARE FOR INFORMATIONAL PURPOSES ONLY.



| GROUND FLOOR                 |               |
|------------------------------|---------------|
| Ground floor – 2nd apartment |               |
| HALL                         | 3,80          |
| DINING ROOM - LIVING ROOM    | 22,87         |
| KITCHEN                      | 10,09         |
| CORRIDOR                     | 4,60          |
| BATHROOM 1                   | 6,34          |
| BATHROOM 2                   | 5,44          |
| BEDROOM 1                    | 15,40         |
| BEDROOM 2                    | 9,21          |
| BEDROOM 3                    | 11,01         |
| <b>GENERAL INTERIOR</b>      | <b>88,76</b>  |
| TERRACE 1                    | 54,45         |
| TERRACE 2                    | 43,03         |
| <b>GENERAL EXTERIOR</b>      | <b>97,48</b>  |
| <b>TOTAL</b>                 | <b>186,24</b> |

THIS PLAN SHALL NOT CONSTITUTE A LEGALLY BINDING DOCUMENT. IT IS SUBJECT TO AMENDMENTS ARISING FROM THE EXECUTION OF THE WORKS AND TO THE DECISIONS OF THE PROJECT MANAGEMENT. THE FINAL SURFACE AREAS SHALL BE THOSE RESULTING FROM THE COMPLETED WORKS. INDOOR AND OUTDOOR FURNITURE, AS WELL AS HOUSEHOLD APPLIANCES NOT EXPRESSLY INCLUDED IN THE SPECIFICATIONS, DO NOT FORM PART OF THE CONTRACT, AND ANY DIMENSIONS OR POSITIONS INDICATED ARE FOR INFORMATIONAL PURPOSES ONLY.



| GROUND FLOOR                 |              |
|------------------------------|--------------|
| Ground floor – 3rd apartment |              |
| HALL                         | 7,1          |
| DINING ROOM - LIVING ROOM    | 22,16        |
| KITCHEN                      | 7,9          |
| CORRIDOR                     | 1,44         |
| BATHROOM 1                   | 4,45         |
| BATHROOM 2                   | 4,98         |
| BEDROOM 1                    | 13,79        |
| BEDROOM 2                    | 9,38         |
| BEDROOM 3                    | 7,75         |
| LAUNDRY ROOM                 | 2,86         |
| <b>GENERAL INTERIOR</b>      | <b>81,81</b> |
| COURTYARD                    | 4,94         |
| <b>GENERAL EXTERIOR</b>      | <b>4,94</b>  |
| <b>TOTAL</b>                 | <b>86,75</b> |

THIS PLAN SHALL NOT CONSTITUTE A LEGALLY BINDING DOCUMENT. IT IS SUBJECT TO AMENDMENTS ARISING FROM THE EXECUTION OF THE WORKS AND TO THE DECISIONS OF THE PROJECT MANAGEMENT. THE FINAL SURFACE AREAS SHALL BE THOSE RESULTING FROM THE COMPLETED WORKS. INDOOR AND OUTDOOR FURNITURE, AS WELL AS HOUSEHOLD APPLIANCES NOT EXPRESSLY INCLUDED IN THE SPECIFICATIONS, DO NOT FORM PART OF THE CONTRACT, AND ANY DIMENSIONS OR POSITIONS INDICATED ARE FOR INFORMATIONAL PURPOSES ONLY.